



Tested to  
ANSI/UL 711  
and ANSI/UL 299  
Model FESA5

Printed in Mexico  
M08-0039-007 M 05/11

### IMPORTANT! Please read carefully and save.

This user's manual contains important information about your fire extinguisher's operation. If you are installing this fire extinguisher for use by others, you must leave this manual—or a copy of it—with the end user.

Read extinguisher label and the entire user's manual carefully before installing or using the unit. Make sure everyone in your household is completely familiar with the operation of the extinguisher, and review the instructions regularly. In an emergency, you will not have time to read instructions.

## TABLE OF CONTENTS

Important Information About Fire Extinguishers . . . . .	1
Read Before Installing or Using This Fire Extinguisher . . . . .	1
Where to Install This Extinguisher . . . . .	2
How to Install This Extinguisher . . . . .	2
Checking and Inspecting the Fire Extinguisher . . . . .	2
How to Operate Your Fire Extinguisher in a Fire Emergency . . . . .	3
After the Fire is Extinguished . . . . .	3
How to Clean After Using a Fire Extinguisher . . . . .	4
If Your Fire Extinguisher Needs Service . . . . .	4
Disposing of a Used Extinguisher . . . . .	4
Limited Warranty . . . . .	4

© 2011 BRK Brands, Inc. All rights reserved. Distributed by BRK Brands, Inc., 3901 Liberty Street Road, Aurora, IL 60504-8122 Consumer Affairs: (800) 323-9005 • www.firstalert.com

## IMPORTANT INFORMATION ABOUT FIRE EXTINGUISHERS

**NOTE:** Be sure the extinguisher is rated to fight the type of fire most likely to occur in the area you choose to install it. Since household fires commonly start in the kitchen, you should always install an extinguisher in the kitchen. For added security, you should also install additional extinguishers in utility areas, and other living areas in your household.

Fire extinguishers are classified by fire type. The A, B and C rating system defines the kinds of burning materials each fire extinguisher is designed to fight. The numbers in front of the A, B, or C indicate the rating for size of the fire the unit can extinguish. Using the wrong type of fire extinguisher can do more harm than good. Make sure you understand which fire extinguisher to use on each class of fire!



**Class A rating:** The agent/powder is suitable for fighting small fires involving wood, paper, cloth, rubber, and some plastics.

**Class B rating:** The agent/powder is suitable for fighting small fires involving grease, oil, gasoline, kerosene, and other flammable liquids.

**Class C rating:** The agent/powder is suitable for fighting small fires in "live" electrical equipment.

Model FESA5 is rated 5-B:C. It is NOT rated to fight Class A fires.

## READ BEFORE INSTALLING OR USING THIS FIRE EXTINGUISHER!

### ▲ DANGER!

- This extinguisher is designed for use against small fires that have just started and are small enough to fight safely. It is not designed to fight large fires that are burning out of control. If the fire is too hot or smoky for you to get within 6 feet (2 meters) of it, do not try to fight it yourself. Warn everyone, evacuate the premises, and have someone call the Fire Department from outside the building. Trying to fight a large fire yourself can result in injury or death.
- Do not puncture or burn any fire extinguisher. The contents are under pressure, and the extinguisher could explode.
- Never locate this extinguisher close to an engine, stove or other source of heat. It is pressurized and could rupture or explode if exposed to temperatures over 150° F (66° C).

### ▲ CAUTION!

- This extinguisher contains a dry powder extinguishing agent. The agent/powder is nontoxic, but can irritate skin. When using this unit, avoid breathing the powder. Always ventilate the area after use.

## WHERE TO INSTALL THIS EXTINGUISHER

This extinguisher is designed to be used in your car or other vehicle. It has a special mounting bracket to keep the unit from discharging accidentally. We recommend you mount the extinguisher to keep it safe from puncture or other damage. Since not every vehicle can accommodate the mounting bracket, the bracket is also designed to keep the extinguisher from rolling if you do not mount it.

### This Fire Extinguisher may be mounted:

- In the trunk of a vehicle
- On an inside panel of a vehicle
- On a clean, dry surface where the temperature does not go above 120° F (49° C) or below -40° F (-40° C)

### Do NOT mount this Fire Extinguisher:

- To the dashboard of the vehicle
- To the exterior of a vehicle
- To the engine of a vehicle
- On or near any other source of heat

## HOW TO INSTALL THIS EXTINGUISHER

**NOTE:** Since surface types vary, mounting screws are not included. Purchase screws or bolts specifically designed for the surface on which you will mount the fire extinguisher. The fire extinguisher label lists its maximum weight.

### Installing the Mounting Bracket in a Vehicle

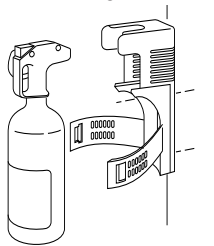
#### ▲ CAUTION!

- This extinguisher has a quick-release bracket for mounting. Mount the extinguisher as shown in "Installing the Mounting Bracket."
- Do not use sheet metal screws or wood screws; vehicle vibrations may loosen them.
- Do not make holes in the vehicle structure if you are not sure what is on the other side. You may accidentally cause severe damage to electrical lines, gasoline lines or tanks, or other vehicle systems.
- Do not break the plastic loop holding the safety pin in place! This loop prevents accidental discharge of the fire extinguisher. Break the loop only in an emergency before using the fire extinguisher.

Remove mounting bracket from extinguisher by unlocking the clasp and pulling the bracket away from the extinguisher. Use two strong screws (such as #8 machine screws) to mount the bracket securely onto metal or another solid surface that can support the weight of the fire extinguisher. The mounting bracket must be secure so you can remove the extinguisher quickly in an emergency.

- Install the mounting bracket as shown in "Installing the Mounting Bracket" using strong screws (such as #8 machine screws) with washers and nuts. The screws should not be longer than necessary to accommodate a washer and nut. Mounting screws, washers, and nuts are not included (see Note above.)
- After installing the mounting bracket, replace the extinguisher on the bracket with the nose of the extinguisher pointing into the bracket.

#### Installing the Mounting Bracket



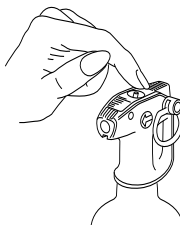
## CHECKING AND INSPECTING THE FIRE EXTINGUISHER

### ▲ WARNING!

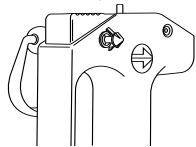
DO NOT CHECK THE PRESSURE OR TEST THE FIRE EXTINGUISHER BY SQUEEZING THE TRIGGER, EVEN BRIEFLY. ONCE USED IT WILL GRADUALLY LOSE PRESSURE AND WILL NOT BE FULLY CHARGED FOR USE IN AN EMERGENCY.

- Inspect and test the extinguisher once a week. Start by removing the extinguisher from the mounting bracket/cap. Check the extinguisher pressure by pressing the green button on top of the cap as shown in "Checking the Pressure." If the button pops back up, the extinguisher is properly pressurized and ready to use. If the button stays down, the extinguisher has lost pressure and must be replaced.
- Check for signs of damage or misuse. Make sure you can still read all the text on the label. Carefully examine the surface of the extinguisher for corrosion. You can help prevent corrosion by cleaning the extinguisher if it gets wet or dirty. If you notice corrosion during the warranty period, return the unit to First Alert® (see "Limited Warranty" at the end of this manual).
- Make sure the tamper indicator ("safety seal") is still intact as shown in "Location Of The 'Safety Seal'" and the nozzle is clean and unobstructed.
- When you finish inspecting the fire extinguisher, always put it back into the mounting bracket. Make sure the handle is locked down and the safety seal is intact.

#### Checking the Pressure



#### Location of the "Safety Seal"



### IMPORTANT!

For more information about fire extinguishers, consult the NFPA Standard #10, "Portable Fire Extinguishers," available from the National Fire Protection Association, Inc., Batterymarch Park, Quincy, MA 02169, USA.

## HOW TO OPERATE YOUR FIRE EXTINGUISHER IN A FIRE EMERGENCY

### ▲ DANGER!

- Make sure your extinguisher may be safely and effectively used on the small fire you want to fight. Always use extreme caution when fighting any fire. Fight a fire only where there is a clear escape path to allow you to get out safely if the fire gets worse.

### ▲ WARNING!

- Avoid breathing smoke and heated fumes; stay low if necessary. Burning materials will release toxic fumes. Inhaling these fumes may cause injury or death.

### ▲ CAUTION!

- Always stand back far enough away from the fire—near an exit—and make sure nothing is between you and your escape route. If you get too close to a fire, you risk getting burned or hit by splattering material like grease. If the fire is too hot or smoky for you to get within 6 feet (2 meters), DO NOT try to fight the fire yourself. Evacuate immediately and call the Fire Department.
- For fires on a kitchen stove, turn oven or burners off immediately if possible. If you can't reach the oven or burner controls safely, extinguish the fire first, then turn them off.
- Fight the fire from an upwind direction with your back to any strong air current. Trying to fight a fire with currents blowing towards you can result in serious injury.

## TO FIGHT THE FIRE

### ▲ DANGER!

- Turn off the engine immediately if you suspect a vehicle fire. Evacuate the car, sending passengers a safe distance away. If you see flames escaping from under the vehicle's hood, the fire is too large to fight. DO NOT attempt to open the hood or fight the fire; instead move a safe distance from the car and call for help immediately. Trying to fight this size fire could result in injury or death.
- If there are no visible flames and you attempt to fight a small fire, always use extreme caution if lifting your vehicle's hood. Flames may flash when you open the hood, which can cause severe injury or death.

### ▲ WARNING!

- This unit will not operate with mounting bracket attached. The extinguisher must be removed from the mounting bracket or it cannot discharge its contents to fight a fire.

### If You Suspect a Vehicle Fire:

- Pull vehicle over, away from all traffic.
- Turn off vehicle engine.
- Evacuate all passengers and move them a safe distance from the vehicle. Do not plug a cellular phone into your own vehicle to call the Fire Department.
- Remove the extinguisher from the mounting bracket.
- Hold the extinguisher firmly, with the nozzle facing away from you. Pull out the pin to break the 'Safety Seal.' You won't be able to squeeze the trigger until the safety seal is removed.
- Stand back 6 feet (2 meters) from the fire and make sure the fire is not between you and your exit.
- Hold the extinguisher upright and aim the nozzle at the base of the fire.
- Press and hold the trigger to discharge the powder.
- Sweep the spray at the base of the burning material, using quick side-to-side motions. (If the spray scatters the fire, move back.)
- Move slowly towards the fire as the extinguisher spray pushes the fire back. Maintain a 6-foot (2 meter) distance between you and the front of the fire at all times.
- Completely discharge the contents of the extinguisher and make sure the fire is completely out. Flashbacks are common with fires.

#### Breaking the Safety Seal



#### Press and Hold Trigger To Discharge Powder



## AFTER THE FIRE IS EXTINGUISHED

### ▲ DANGER!

Do not start the vehicle up or plug in any electrical accessories (cellular phone, CD player, TV or VCR, etc.) until the vehicle has been cleaned up completely. It is very important to remove the powder from electrical equipment after a fire. If the powder gets wet, it can conduct electricity. (Using a dry chemical extinguisher on wet electrical equipment can be hazardous for this reason.) This may worsen an electrical leakage problem, impair the equipment's insulation, or create an electrical shock hazard.

### If you think the fire had an electrical origin:

- Turn off the engine and do not touch any electrical wires, fuses or accessories.
- Leave the vehicle and stay a safe distance away until the Fire Department arrives.
- Do not restart the vehicle or plug in any electrical appliances or accessories until a licensed mechanic has inspected the vehicle's electrical system.

## HOW TO CLEAN AFTER USING A FIRE EXTINGUISHER

**NOTE:** The powder spray from the extinguisher may spread over a wide area, and may soil upholstery, carpets and walls.

- Sweep/vacuum up as much of the powder as possible. Then use a damp cloth to wipe off the remaining agent.
- If you have any questions about cleaning appliances that the agent has come into contact with, please contact the appliance manufacturer.

## IF YOUR EXTINGUISHER NEEDS SERVICE

This fire extinguisher is a disposable device that is NOT rechargeable.

### ▲ CAUTION!

Do not try to service or repair this fire extinguisher under any circumstances. Do not try to remove the nozzle or valve assembly. This is a pressurized device that can cause serious injury if tampered with.

If there is a problem and it is still under warranty, please see "How to Obtain Warranty Service" in the Limited Warranty.

## DISPOSING OF A USED EXTINGUISHER

Completely discharge the extinguisher outdoors by turning the unit upside down and pulling the trigger. Dispose of the empty unit properly and replace it with a new fire extinguisher.

### ▲ DANGER!

Never puncture, burn or expose this fire extinguisher to temperatures over 150° F (66° C) even if it is fully discharged. The contents are under pressure and it could explode.

## LIMITED WARRANTY

BRK Brands, Inc. ("BRK") the maker of First Alert® brand products, warrants that for a period of ten years from the date of purchase, this product will be free from defects in material and workmanship. BRK, at its option, will repair or replace this product or any component of the product found to be defective during the warranty period. Replacement will be made with a new or remanufactured product or component. If the product is no longer available, replacement may be made with a similar product of equal or greater value. This is your exclusive warranty.

This warranty is valid for the original retail purchaser from the date of initial retail purchase and is not transferable. Keep the original sales receipt. Proof of purchase is required to obtain warranty performance. BRK dealers, service centers, or retail stores selling BRK products do not have the right to alter, modify or any way change the terms and conditions of this warranty.

This warranty does not cover normal wear of parts or damage resulting from any of the following: negligent use or misuse of the product, use on improper voltage or current, use contrary to the operating instructions, disassembly, repair or alteration by anyone other than BRK or an authorized service center. Further, the warranty does not cover acts of God, such as fire, flood, hurricanes and tornadoes.

BRK shall not be liable for any incidental or consequential damages caused by the breach of any express or implied warranty. Except to the extent prohibited by applicable law, any implied warranty of merchantability or fitness for a particular purpose is limited in duration to the duration of the above warranty. Some states, provinces, or jurisdictions do not allow the exclusion or limitation of incidental or consequential damages or limitations on how long an implied warranty lasts, so the above limitations or exclusion may not apply to you. This warranty gives you specific legal rights, and you may also have other rights that vary from state to state, or province to province.

### How to Obtain Warranty Service

**Service:** If service is required, do not return the product to your retailer. In order to obtain warranty service, contact the Consumer Affairs Division at 1-800-323-9005, 7:30 AM to 5:00 PM, Central Standard Time, Monday through Friday. To assist in serving you, please have the model number and date of purchase available when calling.

**Address:** 25 Spur Drive, El Paso, TX 79906

