

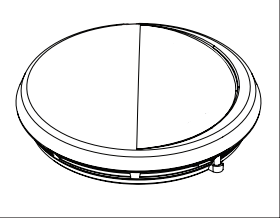
**USER'S MANUAL SMOKE AND FIRE ALARM**

**10 YEAR SEALED BATTERY OPERATED PHOTOELECTRIC SMOKE ALARM WITH SILENCE FEATURE**

CONFORMS TO UL STD 217 Model P1210

**IMPORTANT! PLEASE READ CAREFULLY AND SAVE.**

The warnings/instructions card and manual contains important information about your Smoke Alarm's operation. If you are installing this Alarm for use by others, you must leave this manual—or a copy of it—with the end user. Reference product card for additional information.



**Understand the Different Type of Smoke Alarms:** Battery powered or electric? Different Smoke Alarms provide different types of protection. See "About Smoke Alarms" for details.

**Know Where to Install Your Smoke Alarms:** Fire Safety Professionals recommend at least one Smoke Alarm on every level of your home. In every bedroom, and in every bedroom hallway or separate sleeping area. See "Recommended Locations for Smoke Alarms" and "Locations to Avoid for Smoke Alarms" for details.

**Know What Smoke Alarms Can and Can't Do:** A Smoke Alarm can help alert you to fire, giving you precious time to escape. It can only sound an alarm once smoke reaches the sensor. See "Limitations of Smoke Alarms" for details.

**Check Your Local Building Codes:** This Smoke Alarm is designed to be used in a typical single-family home. It alone will not meet requirements for boarding houses, apartment buildings, hotels or motels. See "Special Considerations" for details.

**HOW TO INSTALL THIS SMOKE ALARM**

**TOOLS YOU WILL NEED:**  
 THIS UNIT IS DESIGNED TO BE MOUNTED ON THE CEILING, OR ON THE WALL IF NECESSARY.  
 • Drill with 3/16" (5 mm) drill bit  
 • Standard flathead screwdriver  
 • Hammer

**FOLLOW THESE SIMPLE STEPS**

1. Hold the mounting bracket against the ceiling (or wall) so the two clusters of universal mounting holes are aligned approximately at the 9:00 and 3:00 o'clock positions. See the illustration below. One of the three sets of holes shown, A, B or C (see image) and trace around one of the sets. Be sure to choose a top and bottom slot on opposite sides so you can rotate the universal mounting bracket into position later. This will make it easier in the future to remove the mounting bracket without completely removing the screws.

**THE PARTS OF THIS SMOKE ALARM**

1. Test/Silence button
2. Dual Power indicator light and Alarm indicator
3. Green LED provides visual indication of an alarm
4. Memory condition: Red LED provides visual indication of an Alarm and Hush modes

**WARNING!** Do not install this Smoke Alarm over an existing electrical box. Only AC powered units are intended for installation over electrical boxes. Put the unit where it won't get covered with dust when you drill the mounting holes.

**NOTE:** After you activate the battery, the power indicator light may flash. (If the unit alarms, the light will blink rapidly, and the horn will repeatedly sound 3 beeps, pause, 3 beeps.) Once the Smoke Alarm is on the bracket, you can rotate the Alarm to adjust the alignment.

**ACTIVATING THE BATTERY:** Mount alarm to mounting bracket to activate. Once unit is activated, it cannot be turned off.

**NOTE:** After you activate the battery, the power indicator light may flash. (If the unit alarms, the light will blink rapidly, and the horn will repeatedly sound 3 beeps, pause, 3 beeps.) Once the Smoke Alarm is on the bracket, you can rotate the Alarm to adjust the alignment.

**OPTIONAL LOCKING FEATURE**

The optional locking feature is designed to prevent unauthorized removal of the alarm. It is not necessary to activate the lock in single-family households where unauthorized alarm removal is not a concern.

**IMPORTANT!** To permanently remove the locking pin, insert a flathead screwdriver between the locking pin and the lock and pry the pin out of the lock.

**INTRODUCTION**

Thank you for choosing First Alert® for your Smoke Alarm needs. You have purchased a state of the art Smoke Alarm designed to provide you with early warning of a fire. Please take the time to read this manual and make the Smoke Alarm an integral part of your family's safety plan.

**KEY FEATURES OF THE P1210 SMOKE ALARM:**  
 Photoelectric Sensing Technology: Photoelectric Sensors are generally more sensitive than ionization sensors in detecting smoldering fires which commonly occur in couches or bedding.  
 10 Year Sealed Battery: Patented technology provides 360° of direct access to the smoke sensor.  
 Single Test/Silence Button: Allows you to test the Alarm or silence nuisance alarms. Testing the Alarm assures you that the unit is functioning correctly and ready to protect you and your family. The Alarm can be silenced for up to 10 minutes in the event of a nuisance alarm.  
 10 Year End of Life Indicator: 3 horn pulses every 45 seconds alerts you that the unit must be replaced.  
 Local Alarm Memory: Green LED flashes 3 times every 43 seconds for 24 hours. After 24 hours the unit will chirp rapidly while the Test button is pressed. Memory is cleared when the button is released.  
 Low battery warning: The Alarm will sound a "chirp" once per minute when the Smoke Alarm needs to be replaced.  
 Low battery silence: The Alarm can be silenced for 8 hours.  
 All First Alert® Smoke Alarms conform to regulatory requirements, including UL217 and are designed to detect particles of combustion. Smoke particles of varying number and size are produced in all fires.

Ionization technology is generally more sensitive than photoelectric technology at detecting small particles, which tend to be produced in greater amounts by flaming fires, which consume combustible materials rapidly and spread quickly. Sources of these fires may include paper burning in a wastebasket, or a grease fire in the kitchen.

Photoelectric technology is generally more sensitive than ionization technology at detecting large particles, which tend to be produced in greater amounts by smoldering fires, which may smolder for hours before bursting into flame. Sources of these fires may include cigarettes burning in couches or bedding.

For maximum protection, use both types of Smoke Alarms on each level and in every bedroom of your home.

**FIRE SAFETY TIPS**

Follow safety rules and prevent hazardous situations: 1) Use smoking materials properly. Never smoke in bed. 2) Keep matches or lighters away from children. 3) Store flammable materials in proper containers. 4) Keep electrical appliances in good condition and don't overload electrical circuits. 5) Keep stoves, barbecue grills, fireplaces and chimneys grease- and debris-free. 6) Never leave anything cooking on the stove unattended. 7) Keep portable heaters and open flames, like candles, away from flammable materials; Do Not! rub alcohol unattended. Keep alarms clean, and test them weekly. Replace alarms immediately if they are not working properly. Smoke Alarms that do not work cannot alert you to a fire. Keep at least one working fire extinguisher on every floor, and an additional one in the kitchen. Have fire escape ladders or other reliable means of escape from an upper floor in case stairs are blocked.

**BEFORE YOU INSTALL THIS SMOKE ALARM**

**IMPORTANT!** Read "Recommended Locations for Smoke Alarms" and "Locations to Avoid for Smoke Alarms" before beginning. This unit monitors the air, and when smoke reaches its sensing chamber, it alarms. It can give you more time to escape before fire spreads. This unit can ONLY give an early warning of developing fires. It is installed, maintained and located where smoke can reach it, and where all residents can hear it, as described in this manual. This unit will not sense gas, heat, or flame. It cannot prevent or extinguish fires.

© 2015 BRK Brands, Inc. All rights reserved. Designed by BRK Brands, Inc. First Alert® is a registered trademark of the First Alert™ brand. Printed in Mexico • Model P1210-015

Installed on Replace by

**TO LOCK THE MOUNTING BRACKET**

1. Using needle-nose pliers, detach the pin from the mounting bracket.
2. Insert the locking pin through the hole on the back of the smoke alarm as shown in the diagram.

**TO UNLOCK THE MOUNTING BRACKET**

1. Insert a flathead screwdriver between the mounting bracket and the locking pin.
2. Pry the alarm away from the bracket by pushing up the screwdriver and turning the alarm counterclockwise (left) as the diagram shows.

**WEELY TESTING**

**WARNING!** Never use an open flame of any kind to test this unit. You might accidentally damage or set fire to the unit or to your home.

• If the Alarm ever fails to test properly, replace it immediately. Products under warranty may be returned to the manufacturer for replacement. See "Limited Warranty" for details.

• DO NOT stand close to the Alarm when the horn is sounding. Exposure at close range may be harmful to your hearing. When testing, step away from the horn's sating sound.

It is important to test this unit every week to make sure it is working properly. Using the Test/Silence button is the recommended way to test this Smoke Alarm. Press and hold the Test/Silence button on the cover of the unit until the alarm sounds for a few seconds after you release the button. If it does not alarm, make sure the unit is receiving power and test it again. If it still does not alarm, replace it immediately. During testing you will hear a loud, repeating horn pattern: 3 beeps, pause, 3 beeps, pause. Red LED flashes rapidly.

**REGULAR MAINTENANCE**

This unit has been designed to be as maintenance free as possible, but there are a few simple things you must do to keep it working properly.

• Clean the Smoke Alarm at least once a month; gently vacuum any dust that using your household vacuum's soft brush attachment, and test the Smoke Alarm after cleaning. Never use water, cleaners or solvents since they may damage the unit.

• The Smoke Alarm becomes contaminated by excessive dirt, dust and/or grime, and cannot be cleaned to avoid unwanted alarms, replace the unit immediately.

• Relocate the unit if it sounds frequent unwanted alarms.

See "Locations to Avoid for Smoke Alarms" for details.

**REGULAR MAINTENANCE**

This unit has been designed to be as maintenance free as possible, but there are a few simple things you must do to keep it working properly.

• Clean the Smoke Alarm at least once a month; gently vacuum any dust that using your household vacuum's soft brush attachment, and test the Smoke Alarm after cleaning. Never use water, cleaners or solvents since they may damage the unit.

• The Smoke Alarm becomes contaminated by excessive dirt, dust and/or grime, and cannot be cleaned to avoid unwanted alarms, replace the unit immediately.

• Relocate the unit if it sounds frequent unwanted alarms.

See "Locations to Avoid for Smoke Alarms" for details.

**IMPORTANT!** Actual service life depends on the Smoke Alarm and the environment in which it is installed. You MUST replace the Smoke Alarm immediately once the unit starts "chirping" (the "low battery warning").

**IF THIS SMOKE ALARM SOUNDS RESPONDING TO AN ALARM**

**WARNING!** If this alarm sounds, you may have a fire. If you hear a "chirp" about once a minute, replace the Smoke Alarm. The cover may be dirty.

• If the unit alarms get everyone out of the house immediately.

• If the unit alarms and you are not testing the unit, it is warning you of a potentially dangerous situation that requires your immediate attention. NEVER ignore any alarm, ignoring the alarm may result in injury or death.

• Never remove the batteries from a battery operated Smoke Alarm to stop an unwanted alarm (caused by cooking smoke, etc.). Removing batteries disables the alarm so it cannot sense smoke, and removes your protection. Instead open a window or the smoke away from the unit. The alarm will reset automatically.

• Meet at your planned meeting place outside your home, and do a head count to make sure everybody got out safely.

**WHAT TO DO IN CASE OF FIRE**

Don't panic; stay calm. Follow your family escape plan.

Get out of the house as quickly as possible. Don't stop to get dressed or collect anything.

Feel doors with the back of your hand before opening them. If a door is cool, open it slowly. Don't open a hot door. Keep doors and windows closed, unless you must escape through them.

Cover your nose and mouth with a cloth (preferably damp). Take short, shallow breaths.

Meet at your planned meeting place outside your home, and do a head count to make sure everybody got out safely.

**TO LOCK THE MOUNTING BRACKET**

1. Using needle-nose pliers, detach the pin from the mounting bracket.
2. Insert the locking pin through the hole on the back of the smoke alarm as shown in the diagram.

**TO UNLOCK THE MOUNTING BRACKET**

1. Insert a flathead screwdriver between the mounting bracket and the locking pin.
2. Pry the alarm away from the bracket by pushing up the screwdriver and turning the alarm counterclockwise (left) as the diagram shows.

**WEELY TESTING**

**WARNING!** Never use an open flame of any kind to test this unit. You might accidentally damage or set fire to the unit or to your home.

• If the Alarm ever fails to test properly, replace it immediately. Products under warranty may be returned to the manufacturer for replacement. See "Limited Warranty" for details.

• DO NOT stand close to the Alarm when the horn is sounding. Exposure at close range may be harmful to your hearing. When testing, step away from the horn's sating sound.

It is important to test this unit every week to make sure it is working properly. Using the Test/Silence button is the recommended way to test this Smoke Alarm. Press and hold the Test/Silence button on the cover of the unit until the alarm sounds for a few seconds after you release the button. If it does not alarm, make sure the unit is receiving power and test it again. If it still does not alarm, replace it immediately. During testing you will hear a loud, repeating horn pattern: 3 beeps, pause, 3 beeps, pause. Red LED flashes rapidly.

**REGULAR MAINTENANCE**

This unit has been designed to be as maintenance free as possible, but there are a few simple things you must do to keep it working properly.

• Clean the Smoke Alarm at least once a month; gently vacuum any dust that using your household vacuum's soft brush attachment, and test the Smoke Alarm after cleaning. Never use water, cleaners or solvents since they may damage the unit.

• The Smoke Alarm becomes contaminated by excessive dirt, dust and/or grime, and cannot be cleaned to avoid unwanted alarms, replace the unit immediately.

• Relocate the unit if it sounds frequent unwanted alarms.

See "Locations to Avoid for Smoke Alarms" for details.

**IMPORTANT!** Actual service life depends on the Smoke Alarm and the environment in which it is installed. You MUST replace the Smoke Alarm immediately once the unit starts "chirping" (the "low battery warning").

**IF THIS SMOKE ALARM SOUNDS RESPONDING TO AN ALARM**

**WARNING!** If this alarm sounds, you may have a fire. If you hear a "chirp" about once a minute, replace the Smoke Alarm. The cover may be dirty.

• If the unit alarms get everyone out of the house immediately.

• If the unit alarms and you are not testing the unit, it is warning you of a potentially dangerous situation that requires your immediate attention. NEVER ignore any alarm, ignoring the alarm may result in injury or death.

• Never remove the batteries from a battery operated Smoke Alarm to stop an unwanted alarm (caused by cooking smoke, etc.). Removing batteries disables the alarm so it cannot sense smoke, and removes your protection. Instead open a window or the smoke away from the unit. The alarm will reset automatically.

• Meet at your planned meeting place outside your home, and do a head count to make sure everybody got out safely.

**WHAT TO DO IN CASE OF FIRE**

Don't panic; stay calm. Follow your family escape plan.

Get out of the house as quickly as possible. Don't stop to get dressed or collect anything.

Feel doors with the back of your hand before opening them. If a door is cool, open it slowly. Don't open a hot door. Keep doors and windows closed, unless you must escape through them.

Cover your nose and mouth with a cloth (preferably damp). Take short, shallow breaths.

Meet at your planned meeting place outside your home, and do a head count to make sure everybody got out safely.

**TO LOCK THE MOUNTING BRACKET**

1. Using needle-nose pliers, detach the pin from the mounting bracket.
2. Insert the locking pin through the hole on the back of the smoke alarm as shown in the diagram.

**TO UNLOCK THE MOUNTING BRACKET**

1. Insert a flathead screwdriver between the mounting bracket and the locking pin.
2. Pry the alarm away from the bracket by pushing up the screwdriver and turning the alarm counterclockwise (left) as the diagram shows.

**WEELY TESTING**

**WARNING!** Never use an open flame of any kind to test this unit. You might accidentally damage or set fire to the unit or to your home.

• If the Alarm ever fails to test properly, replace it immediately. Products under warranty may be returned to the manufacturer for replacement. See "Limited Warranty" for details.

• DO NOT stand close to the Alarm when the horn is sounding. Exposure at close range may be harmful to your hearing. When testing, step away from the horn's sating sound.

It is important to test this unit every week to make sure it is working properly. Using the Test/Silence button is the recommended way to test this Smoke Alarm. Press and hold the Test/Silence button on the cover of the unit until the alarm sounds for a few seconds after you release the button. If it does not alarm, make sure the unit is receiving power and test it again. If it still does not alarm, replace it immediately. During testing you will hear a loud, repeating horn pattern: 3 beeps, pause, 3 beeps, pause. Red LED flashes rapidly.

**REGULAR MAINTENANCE**

This unit has been designed to be as maintenance free as possible, but there are a few simple things you must do to keep it working properly.

• Clean the Smoke Alarm at least once a month; gently vacuum any dust that using your household vacuum's soft brush attachment, and test the Smoke Alarm after cleaning. Never use water, cleaners or solvents since they may damage the unit.

• The Smoke Alarm becomes contaminated by excessive dirt, dust and/or grime, and cannot be cleaned to avoid unwanted alarms, replace the unit immediately.

• Relocate the unit if it sounds frequent unwanted alarms.

See "Locations to Avoid for Smoke Alarms" for details.

**IMPORTANT!** Actual service life depends on the Smoke Alarm and the environment in which it is installed. You MUST replace the Smoke Alarm immediately once the unit starts "chirping" (the "low battery warning").

**IF THIS SMOKE ALARM SOUNDS RESPONDING TO AN ALARM**

**WARNING!** If this alarm sounds, you may have a fire. If you hear a "chirp" about once a minute, replace the Smoke Alarm. The cover may be dirty.

• If the unit alarms get everyone out of the house immediately.

• If the unit alarms and you are not testing the unit, it is warning you of a potentially dangerous situation that requires your immediate attention. NEVER ignore any alarm, ignoring the alarm may result in injury or death.

• Never remove the batteries from a battery operated Smoke Alarm to stop an unwanted alarm (caused by cooking smoke, etc.). Removing batteries disables the alarm so it cannot sense smoke, and removes your protection. Instead open a window or the smoke away from the unit. The alarm will reset automatically.

• Meet at your planned meeting place outside your home, and do a head count to make sure everybody got out safely.

**WHAT TO DO IN CASE OF FIRE**

Don't panic; stay calm. Follow your family escape plan.

Get out of the house as quickly as possible. Don't stop to get dressed or collect anything.

Feel doors with the back of your hand before opening them. If a door is cool, open it slowly. Don't open a hot door. Keep doors and windows closed, unless you must escape through them.

Cover your nose and mouth with a cloth (preferably damp). Take short, shallow breaths.

Meet at your planned meeting place outside your home, and do a head count to make sure everybody got out safely.

**TO LOCK THE MOUNTING BRACKET**

1. Using needle-nose pliers, detach the pin from the mounting bracket.
2. Insert the locking pin through the hole on the back of the smoke alarm as shown in the diagram.

**TO UNLOCK THE MOUNTING BRACKET**

1. Insert a flathead screwdriver between the mounting bracket and the locking pin.
2. Pry the alarm away from the bracket by pushing up the screwdriver and turning the alarm counterclockwise (left) as the diagram shows.

**WEELY TESTING**

**WARNING!** Never use an open flame of any kind to test this unit. You might accidentally damage or set fire to the unit or to your home.

• If the Alarm ever fails to test properly, replace it immediately. Products under warranty may be returned to the manufacturer for replacement. See "Limited Warranty" for details.

• DO NOT stand close to the Alarm when the horn is sounding. Exposure at close range may be harmful to your hearing. When testing, step away from the horn's sating sound.

It is important to test this unit every week to make sure it is working properly. Using the Test/Silence button is the recommended way to test this Smoke Alarm. Press and hold the Test/Silence button on the cover of the unit until the alarm sounds for a few seconds after you release the button. If it does not alarm, make sure the unit is receiving power and test it again. If it still does not alarm, replace it immediately. During testing you will hear a loud, repeating horn pattern: 3 beeps, pause, 3 beeps, pause. Red LED flashes rapidly.

**REGULAR MAINTENANCE**

This unit has been designed to be as maintenance free as possible, but there are a few simple things you must do to keep it working properly.

• Clean the Smoke Alarm at least once a month; gently vacuum any dust that using your household vacuum's soft brush attachment, and test the Smoke Alarm after cleaning. Never use water, cleaners or solvents since they may damage the unit.

• The Smoke Alarm becomes contaminated by excessive dirt, dust and/or grime, and cannot be cleaned to avoid unwanted alarms, replace the unit immediately.

• Relocate the unit if it sounds frequent unwanted alarms.

See "Locations to Avoid for Smoke Alarms" for details.

**IMPORTANT!** Actual service life depends on the Smoke Alarm and the environment in which it is installed. You MUST replace the Smoke Alarm immediately once the unit starts "chirping" (the "low battery warning").

**IF THIS SMOKE ALARM SOUNDS RESPONDING TO AN ALARM**

**WARNING!** If this alarm sounds, you may have a fire. If you hear a "chirp" about once a minute, replace the Smoke Alarm. The cover may be dirty.

• If the unit alarms get everyone out of the house immediately.

• If the unit alarms and you are not testing the unit, it is warning you of a potentially dangerous situation that requires your immediate attention. NEVER ignore any alarm, ignoring the alarm may result in injury or death.

• Never remove the batteries from a battery operated Smoke Alarm to stop an unwanted alarm (caused by cooking smoke, etc.). Removing batteries disables the alarm so it cannot sense smoke, and removes your protection. Instead open a window or the smoke away from the unit. The alarm will reset automatically.

• Meet at your planned meeting place outside your home, and do a head count to make sure everybody got out safely.

**WHAT TO DO IN CASE OF FIRE**

Don't panic; stay calm. Follow your family escape plan.

Get out of the house as quickly as possible. Don't stop to get dressed or collect anything.

Feel doors with the back of your hand before opening them. If a door is cool, open it slowly. Don't open a hot door. Keep doors and windows closed, unless you must escape through them.

Cover your nose and mouth with a cloth (preferably damp). Take short, shallow breaths.

Meet at your planned meeting place outside your home, and do a head count to make sure everybody got out safely.

**TO LOCK THE MOUNTING BRACKET**

1. Using needle-nose pliers, detach the pin from the mounting bracket.
2. Insert the locking pin through the hole on the back of the smoke alarm as shown in the diagram.

**TO UNLOCK THE MOUNTING BRACKET**

1. Insert a flathead screwdriver between the mounting bracket and the locking pin.
2. Pry the alarm away from the bracket by pushing up the screwdriver and turning the alarm counterclockwise (left) as the diagram shows.

**WEELY TESTING**

**WARNING!** Never use an open flame of any kind to test this unit. You might accidentally damage or set fire to the unit or to your home.

• If the Alarm ever fails to test properly, replace it immediately. Products under warranty may be returned to the manufacturer for replacement. See "Limited Warranty" for details.

• DO NOT stand close to the Alarm when the horn is sounding. Exposure at close range may be harmful to your hearing. When testing, step away from the horn's sating sound.

It is important to test this unit every week to make sure it is working properly. Using the Test/Silence button is the recommended way to test this Smoke Alarm. Press and hold the Test/Silence button on the cover of the unit until the alarm sounds for a few seconds after you release the button. If it does not alarm, make sure the unit is receiving power and test it again. If it still does not alarm, replace it immediately. During testing you will hear a loud, repeating horn pattern: 3 beeps, pause, 3 beeps, pause. Red LED flashes rapidly.

**REGULAR MAINTENANCE**

This unit has been designed to be as maintenance free as possible, but there are a few simple things you must do to keep it working properly.

• Clean the Smoke Alarm at least once a month; gently vacuum any dust that using your household vacuum's soft brush attachment, and test the Smoke Alarm after cleaning. Never use water, cleaners or solvents since they may damage the unit.

• The Smoke Alarm becomes contaminated by excessive dirt, dust and/or grime, and cannot be cleaned to avoid unwanted alarms, replace the unit immediately.

• Relocate the unit if it sounds frequent unwanted alarms.

See "Locations to Avoid for Smoke Alarms" for details.

**IMPORTANT!** Actual service life depends on the Smoke Alarm and the environment in which it is installed. You MUST replace the Smoke Alarm immediately once the unit starts "chirping" (the "low battery warning").

• Call the Fire Department as soon as possible from outside. Give your address, then your name.

• Never go back inside a burning building for any reason.

• Contact your Fire Department for ideas on making your home safer.

**WARNING!** Alarms have various limitations. See "Limitations of Smoke Alarms" for details.

**USING THE SILENCE FEATURE**

The Silence feature can temporarily quiet an unwanted alarm for up to 9 minutes. To use this feature, press the Test/Silence button on the cover of the unit until no silence and no heavy smoke is present, or if it stays in silence mode continuously, it should be replaced immediately. The LED will flash every 10 seconds while in silence.

**WARNING!** The Silence Feature does not disable the unit—it makes it temporarily less sensitive to smoke. For your safety, if smoke around the unit is dense enough to suggest a potentially dangerous situation, the unit will stay in alarm or re-arm quickly. If you do not know the source of the smoke, do not assume it is an unwanted alarm. Not responding to an alarm can result in property loss, injury, or death.

**SILENCING THE LOW BATTERY WARNING**

This silence feature can temporarily quiet the Low Battery warning "chirp". Press the Test/Silence button on the Alarm. The Red light flashes normally, once every 6 minutes, during Low Battery Warning Silence. After time, the low battery "chirp" will resume. Deactivate the Smoke Alarm and replace it immediately.

**IF YOU SUSPECT A PROBLEM**

Smoke Alarms may not operate properly because of a dead or weak battery, a build-up of dirt, dust or grease on the Smoke Alarm cover, or installation in an improper location. Clean the Smoke Alarm as described in "Regular Maintenance," and then test the Smoke Alarm again. If it fails to test properly when you use the Test/Silence button, or if the problem persists, replace the Smoke Alarm.

• If you hear a "chirp" about once a minute, replace the Smoke Alarm.

• If you experience frequent non-emergency alarms (like those caused by cooking smoke), by relocating the Smoke Alarm. The cover may be dirty.

• If the alarm sounds when no smoke is visible, by cleaning or relocating the Smoke Alarm.

• If the alarm does not sound during testing, make sure the power pack activating lever is pushed all the way securely.

**Do not try fixing the Alarm yourself—it will void your warranty!**

If the Smoke Alarm is still not operating properly, and it is still under warranty, please see "How to Obtain Warranty Service" in the Limited Warranty.

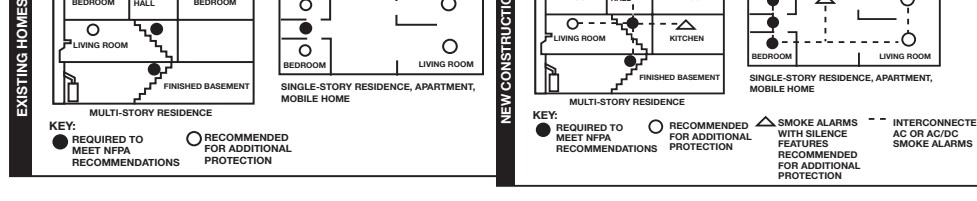
**RECOMMENDED LOCATIONS FOR SMOKE ALARMS**

**INSTALLING SMOKE ALARMS IN SINGLE-FAMILY RESIDENCES** The National Fire Protection Association (NFPA), recommends one Smoke Alarm on every floor, in every sleeping area, and in every bedroom. In new construction, the Smoke Alarm must be AC powered and interconnected. See "Agency Placement Recommendations" for details. For additional coverage, it is recommended that you install a Smoke Alarm in all rooms, halls, storage areas, finished attics, and basements, where temperatures normally remain between 40° F (4.4° C) and 100° F (37.8° C). Make sure no door or other obstruction could keep smoke from reaching the Smoke Alarms.

**MORE SPECIFICALLY, INSTALL SMOKE ALARMS:**

- In every level of your home, including finished attics and basements.
- Inside every bedroom, especially if people sleep with doors closed.
- In the hall near every sleeping area. If your home has multiple sleeping areas, install a unit in each. If a hall is over 40 feet (12 meters) long, install an Alarm at each end.
- At the top of the first-to-second floor stairway, and at bottom of basement stairway.

**IMPORTANT!** Specific requirements for Smoke Alarm installation vary from state to state and from region to region. Check with your local Fire Department for current requirements in your area. It is recommended AC or A/CDC units be interconnected for added protection.



• Call the Fire Department as soon as possible from outside. Give your address, then your name.

• Never go back inside a burning building for any reason.

• Contact your Fire Department for ideas on making your home safer.

**WARNING!** Alarms have various limitations. See "Limitations of Smoke Alarms" for details.

**USING THE SILENCE FEATURE**

The Silence feature can temporarily quiet an unwanted alarm for up to 9 minutes. To use this feature, press the Test/Silence button on the cover of the unit until no silence and no heavy smoke is present, or if it stays in silence mode continuously, it should be replaced immediately. The LED will flash every 10 seconds while in silence.

**WARNING!** The Silence Feature does not disable the unit—it makes it temporarily less sensitive to smoke. For your safety, if smoke around the unit is dense enough to suggest a potentially dangerous situation, the unit will stay in alarm or re-arm quickly. If you do not know the source of the smoke, do not assume it is an unwanted alarm. Not responding to an alarm can result in property loss, injury, or death.

**SILENCING THE LOW BATTERY WARNING**

This silence feature can temporarily quiet the Low Battery warning "chirp". Press the Test/Silence button on the Alarm. The Red light flashes normally, once every 6 minutes, during Low Battery Warning Silence. After time, the low battery "chirp" will resume. Deactivate the Smoke Alarm and replace it immediately.

**IF YOU SUSPECT A PROBLEM**

Smoke Alarms may not operate properly because of a dead or weak battery, a build-up of dirt, dust or grease on the Smoke Alarm cover, or installation in an improper location. Clean the Smoke Alarm as described in "Regular Maintenance," and then test the Smoke Alarm again. If it fails to test properly when you use the Test/Silence button, or if the problem persists, replace the Smoke Alarm.

• If you hear a "chirp" about once a minute, replace the Smoke Alarm.

• If you experience frequent non-emergency alarms (like those caused by cooking smoke), by relocating the Smoke Alarm. The cover may be dirty.

• If the alarm sounds when no smoke is visible, by cleaning or relocating the Smoke Alarm.

• If the alarm does not sound during testing, make sure the power pack activating lever is pushed all the way securely.

**Do not try fixing the Alarm yourself—it will void your warranty!**

If the Smoke Alarm is still not operating properly, and it is still under warranty, please see "How to Obtain Warranty Service" in the Limited Warranty.

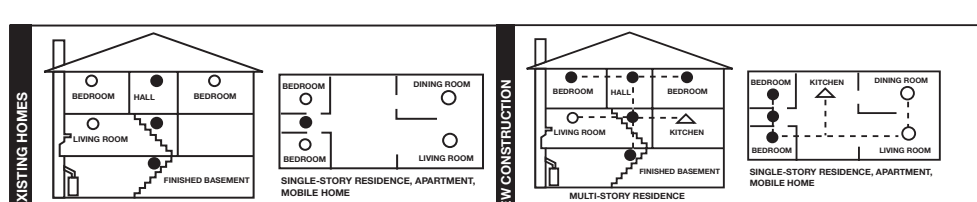
**RECOMMENDED LOCATIONS FOR SMOKE ALARMS**

**INSTALLING SMOKE ALARMS IN SINGLE-FAMILY RESIDENCES** The National Fire Protection Association (NFPA), recommends one Smoke Alarm on every floor, in every sleeping area, and in every bedroom. In new construction, the Smoke Alarm must be AC powered and interconnected. See "Agency Placement Recommendations" for details. For additional coverage, it is recommended that you install a Smoke Alarm in all rooms, halls, storage areas, finished attics, and basements, where temperatures normally remain between 40° F (4.4° C) and 100° F (37.8° C). Make sure no door or other obstruction could keep smoke from reaching the Smoke Alarms.

**MORE SPECIFICALLY, INSTALL SMOKE ALARMS:**

- In every level of your home, including finished attics and basements.
- Inside every bedroom, especially if people sleep with doors closed.
- In the hall near every sleeping area. If your home has multiple sleeping areas, install a unit in each. If a hall is over 40 feet (12 meters) long, install an Alarm at each end.
- At the top of the first-to-second floor stairway, and at bottom of basement stairway.

**IMPORTANT!** Specific requirements for Smoke Alarm installation vary from state to state and from region to region. Check with your local Fire Department for current requirements in your area. It is recommended AC or A/CDC units be interconnected for added protection.



• Call the Fire Department as soon as possible from outside. Give your address, then your name.

• Never go back inside a burning building for any reason.

• Contact your Fire Department for ideas on making your home safer.

**WARNING!** Alarms have various limitations. See "Limitations of Smoke Alarms" for details.

**USING THE SILENCE FEATURE**

The Silence feature can temporarily quiet an unwanted alarm for up to 9 minutes. To use this feature, press the Test/Silence button on the cover of the unit until no silence and no heavy smoke is present, or if it stays in silence mode continuously, it should be replaced immediately. The LED will flash every 10 seconds while in silence.

**WARNING!** The Silence Feature does not disable the unit—it makes it temporarily less sensitive to smoke. For your safety, if smoke around the unit is dense enough to suggest a potentially dangerous situation, the unit will stay in alarm or re-arm quickly. If you do not know the source of the smoke, do not assume it is an unwanted alarm. Not responding to an alarm can result in property loss, injury, or death.

**SILENCING THE LOW BATTERY WARNING**

This silence feature can temporarily quiet the Low Battery warning "chirp". Press the Test/Silence button on the Alarm. The Red light flashes normally, once every 6 minutes, during Low Battery Warning Silence. After time, the low battery "chirp" will resume. Deactivate the Smoke Alarm and replace it immediately.

**IF YOU SUSPECT A PROBLEM**

Smoke Alarms may not operate properly because of a dead or weak battery, a build-up of dirt, dust or grease on the Smoke Alarm cover, or installation in an improper location. Clean the Smoke Alarm as described in "Regular Maintenance," and then test the Smoke Alarm again. If it fails to test properly when you use the Test/Silence button, or if the problem persists, replace the Smoke Alarm.

• If you hear a "chirp" about once a minute, replace the Smoke Alarm.

• If you experience frequent non-emergency alarms (like those caused by cooking smoke), by relocating the Smoke Alarm. The cover may be dirty.

• If the alarm sounds when no smoke is visible, by cleaning or relocating the Smoke Alarm.

• If the alarm does not sound during testing, make sure the power pack activating lever

